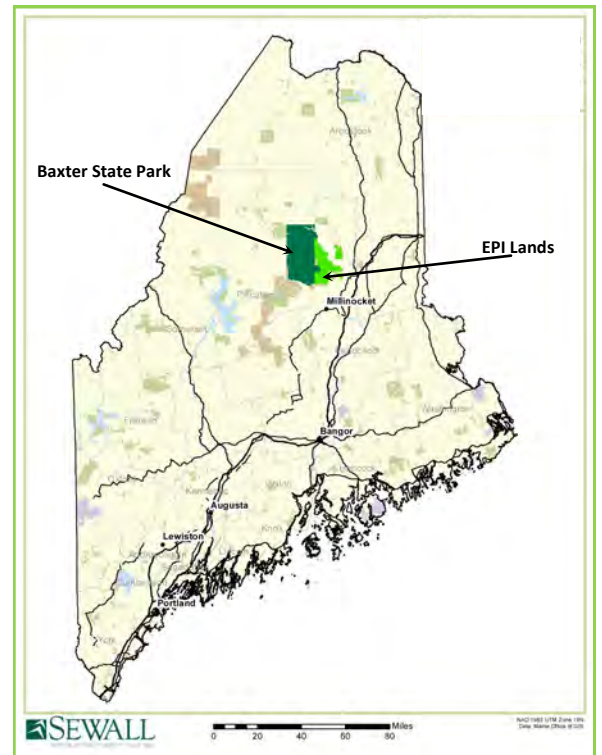


Building Support for a New National Park & National Recreation Area East of Katahdin



NRCM is closely following and supporting a conversation people are having across Maine about the possible creation of a new National Park and National Recreation Area east of Baxter State Park. Elliotsville Plantation, Inc. (EPI) has offered to donate up to 150,000 acres of land for the purpose of creating a National Park and National Recreation Area, 100,000 of which EPI already owns. EPI also proposes to raise a \$40 million endowment to support operations.



The Maine Way of Life

The National Park would be available for hiking, paddling, wildlife watching, bicycling, cross country skiing, and other non-motorized activities normally found in national parks. The National Recreation Area would be available for all of the same activities, plus hunting and snowmobiling. The National Park and National Recreation Area would help revitalize the economy of nearby towns while permanently conserving a portion of Maine's iconic forests, safeguarding more than 30 miles of waterways, and protecting wildlife habitat for many animals.

Conservation Values

The land contains an important plant and wildlife habitat, including wetlands, unusual plants, and natural communities. It also provides habitat for iconic animals including moose and black bear, and rare species such as lynx and pine marten. Common Loons, Bald Eagles, and a variety of northern songbirds are easily seen throughout the area.



More than 30 miles of rivers and streams pass through the land, including the East Branch of the Penobscot River, with four outstanding rapids and falls; the lower reaches of Wassataquoik Stream, which flows out of Baxter State Park; the lower reaches of the Sebois River; and several beautiful ponds. The land is also connected to other public and private conservation lands including the Appalachian Trail and the Allagash Wilderness Waterway, and to lands protected from development by conservation easements to the south and west of Baxter State Park.

Why a National Park?

National parks are considered the gold standard for protecting beautiful natural areas that enrich our lives. Many people will come to visit an area simply because there is a national park. EPI's land includes spectacular views of Katahdin, uncommon ecological features, two of Maine's most pristine rivers, prime wildlife habitat for iconic and rare species, and extensive Native American history. These qualities make the land a prime candidate for this distinguished designation.





**Summary Report:
The Economic Costs and Benefits of a
New National Park and Recreation Area for
Penobscot and Piscataquis Counties, Maine**

This report is a summary of two longer reports—*A Comparative Analysis of the Economics of Two Counties with National Parks and Recreation Areas in Penobscot and Piscataquis Counties, Maine* and *The Regional Economy of Penobscot and Piscataquis Counties, Maine and a Potential National Park and Recreation Area*—that are both available at <http://headwaterseconomics.org/land/reporth/atahdin>



Winter 2013

Boosting the Economy

A February 2013 economic study predicted that 450 to 1,000 new jobs could be created in and around a new National Park and National Recreation Area east of Katahdin, based on the experience of similar communities across the country. These other areas located near national park and national recreation areas have seen a boost in tourism-related jobs, as well as health care and professional and technical services jobs. Also of interest, jobs are being created in these areas by mobile businesses (connected by the internet) that like to locate in beautiful parts of the country with opportunities for outdoor recreation. Read the study summary at: <http://www.nrcm.org/documents/NPfinalsummaryreport.pdf>.

An Act of Congress

Establishing a new National Park and National Recreation Area requires an Act of Congress. Successfully passing an Act of Congress will require the support of Senators King and Collins and Representatives Michaud and Pingree. EPI is working to build a broad base of support in Maine for a project that would be embraced by Maine’s congressional delegation.



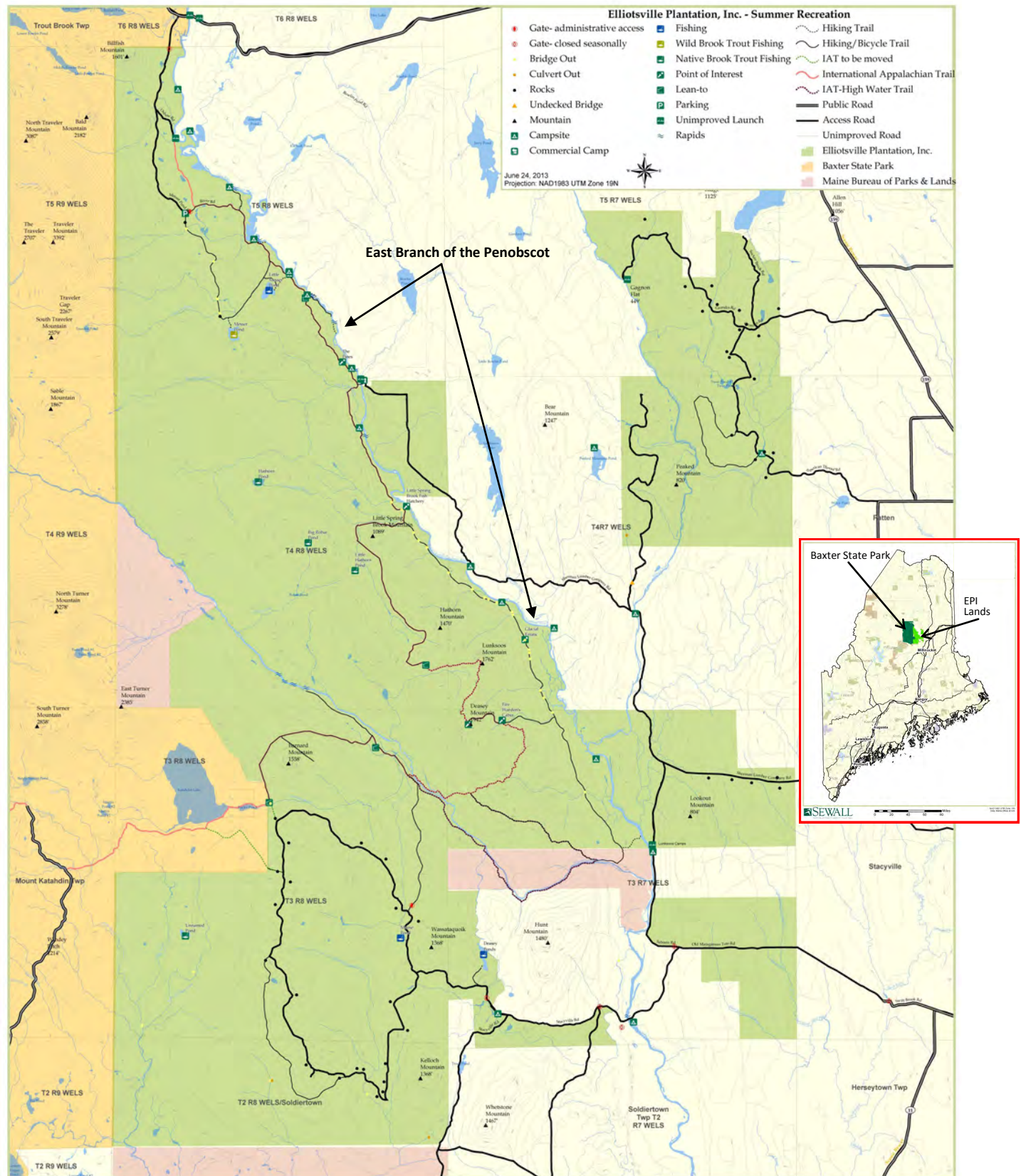
Photo by Bill Duffy

Next Steps

EPI continues to meet with individuals and groups in the Katahdin region and around the state to get input on how this concept can be developed into a plan that takes into account Maine’s tradition of access and recreation in the region. NRCM supports EPI’s work to shape a proposal for a National Park and National Recreation Area that would provide benefits to the people and nature of Maine.

For more information, go to http://www.nrcm.org/issue_nationalpark.asp or contact Eliza Donoghue at eliza@nrcm.org or (207) 430-0118.

The map below shows the land that is currently owned by EPI and that could become a National Park and National Recreation Area. The East Branch of the Penobscot bisects the area; the National Park would be located to the west of the river and the National Recreation Area would lie to the east.



Natural Resources Council of Maine
3 Wade Street • Augusta, Maine • 04330 • (207) 622-3101